

The Rhodia logo, consisting of a white circle with a dot inside, followed by the word "Rhodia" in a sans-serif font.The word "emana" in a large, white, lowercase, sans-serif font, centered on the page. The background features abstract blue and red wavy lines.

**Technology and innovation taking  
care of your body with comfort**

# It's all about FIR

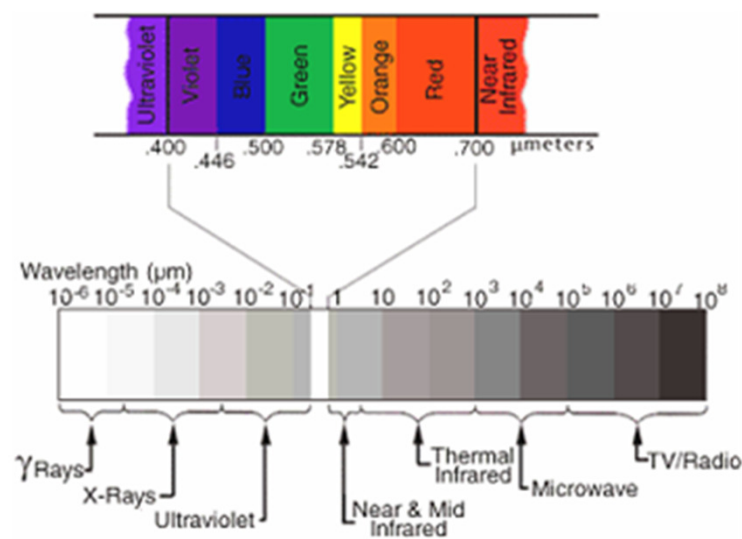


## Far Infrared are electromagnetic waves:

- Invisible to naked eye.
- Characterized by low energy and low penetration, without any collateral damage to biological tissues.
- Which interacts with human body by the strong interaction with water molecules which represent 70% of human body mass.

## The benefits of FIR have been studied for years, in several fields:

- Sportive
- Cosmetics
- Therapeutic
- Medical, in several segments  
(Oncology, Physiotherapy, Cardiology, etc.)

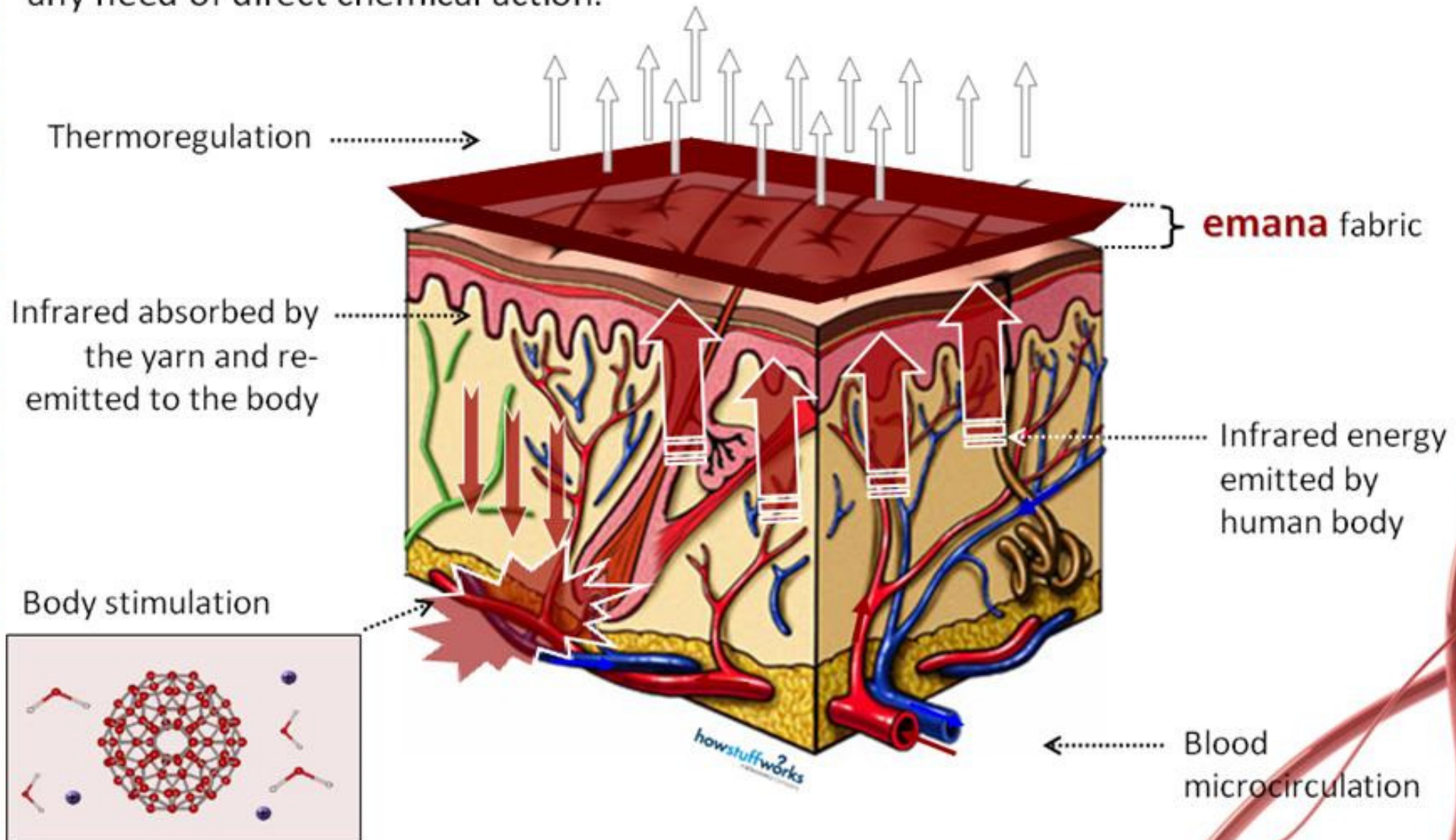


# The **emana** mechanism

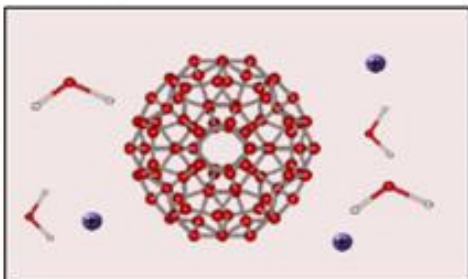
Rhodla

emana

The interaction between **emana** and skin is entirely physical, without any need of direct chemical action.



Body stimulation



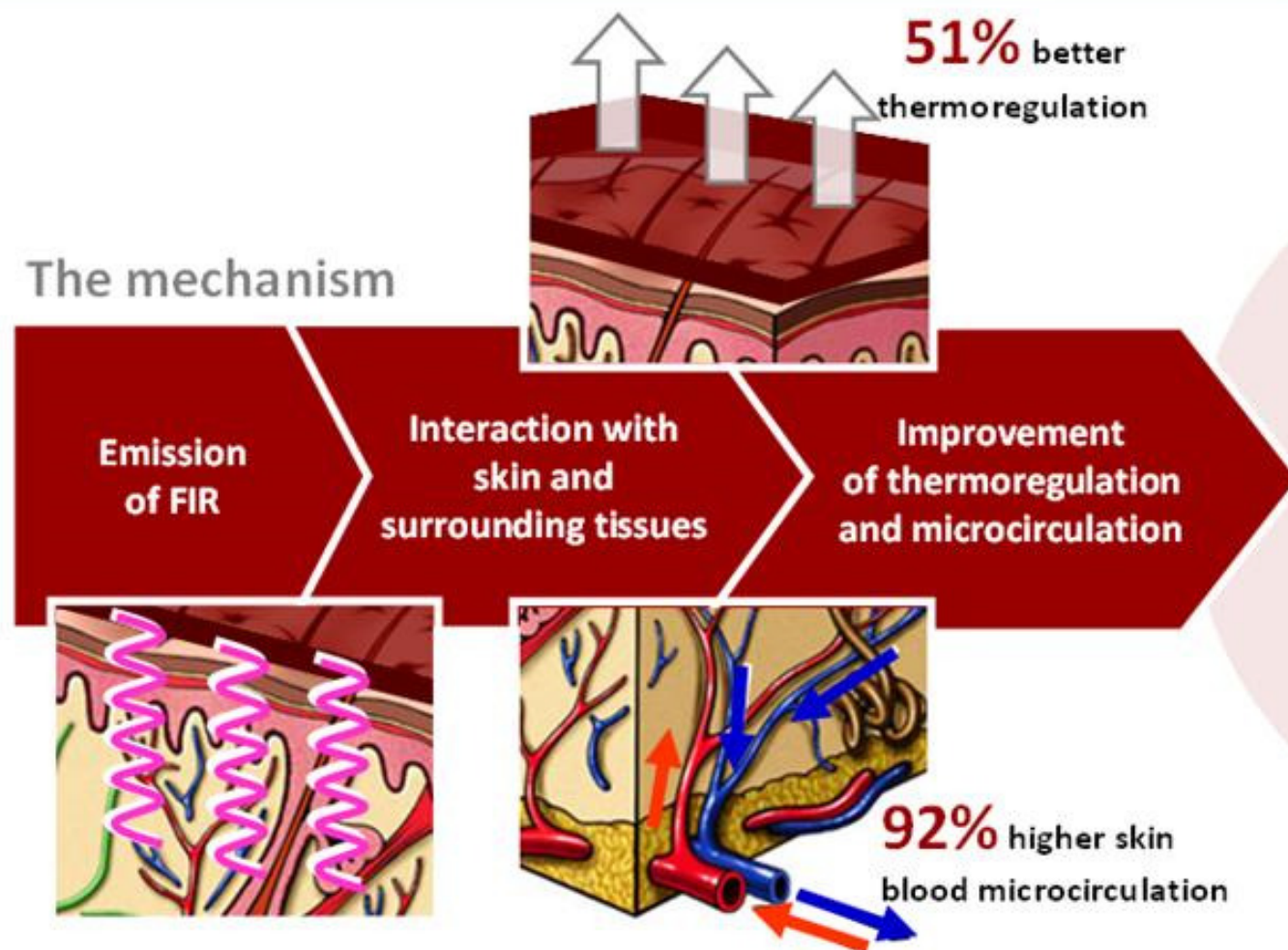
With water represent 70% of human body

# The **emana** benefits

Rhodia

emana

## The mechanism



## Benefits

**9%** more collagen synthesis

**11%** improvement on skin roughness

**8%** more skin elasticity


Interacts with the body stimulating blood microcirculation and thermoregulation, such benefits enhance collagen synthesis, turning your skin healthier, younger and enhancing skin elasticity and smoothness

# The **emana** benefits


Rhodla

emana



 **emana** contributes to a significant reduction of cellulite signs

 **emana** enhances skin elasticity and smoothness

 **emana** stimulates collagen synthesis, turning your skin healthier and younger

**8%** more  
skin elasticity

**11%** improvement  
on cellulite signs

**6% to 16%**  
more collagen synthesis



# Claims used by apparel producers using FIR technology

Rhodla

emana

**Promote comfort and well being**

**Increase body energy**

**Reduce the appearance of cellulite  
as well as sculpt and tone your body**

**Work as a great Body shaper,  
reducing your measurements**

**Facilitates a continuous massaging  
effect on the skin with your body's natural movements.**

**Everlasting effect**



Why **emana** is unique?

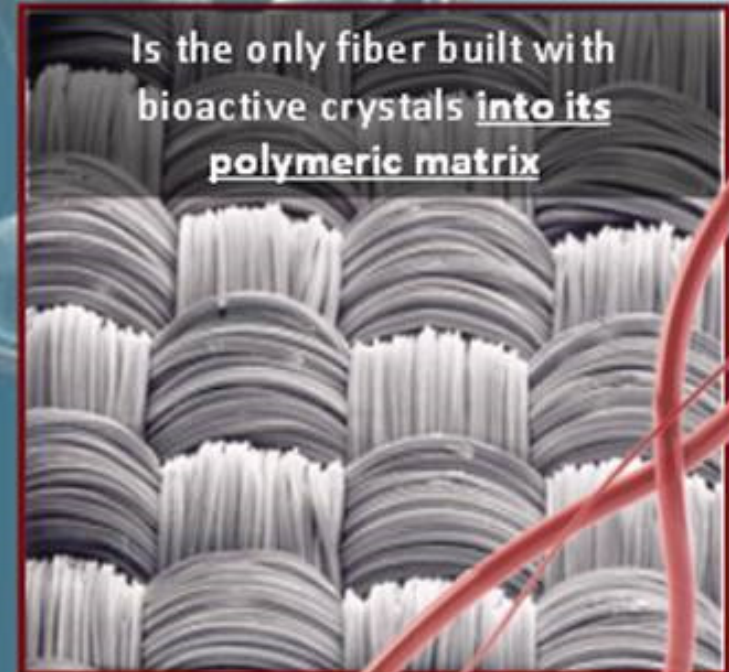
Rhodia

emana

**emana** is an exclusive technology of Rhodia (patents applied), representing a completely unseen innovation in textiles.



Is the only fiber built with  
bioactive crystals into its  
polymeric matrix



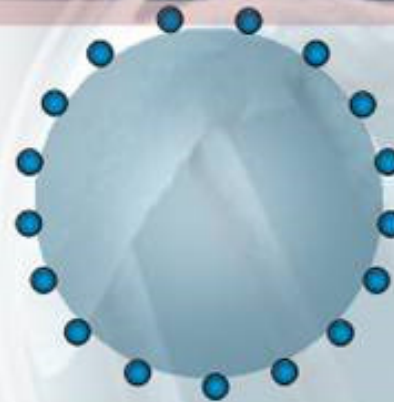
# Why **emana** is unique?



Coating technology



Microcapsules technology



**Emana**



|                            |                          |  |                    |
|----------------------------|--------------------------|--|--------------------|
| Nature of actives          | Inorganic charges        | Organic charges                          | Inorganic charges  |
| Performance Level          | Decreases after washing  | Decreases after washing                  | Everlasting Effect |
| Chemical migration to skin | YES                      | YES                                      | NO                 |
| Touch or comfort level     | Abrasive                 | Average                                  | Comfortable        |
| Color possibilities        | limited to darker shades | Limitation depending on chosen molecules |                    |
| Odor                       | NO                       | YES                                      | NO                 |